



1338 N. Knollwood Circle
Anaheim, CA 92801
t: 714-252-5330
f: 714-252-5335
www.seedorffwelders.com

Electrodes for SEEDORFF Miniature Weld Guns



American Welding Society
Supporting Company Member

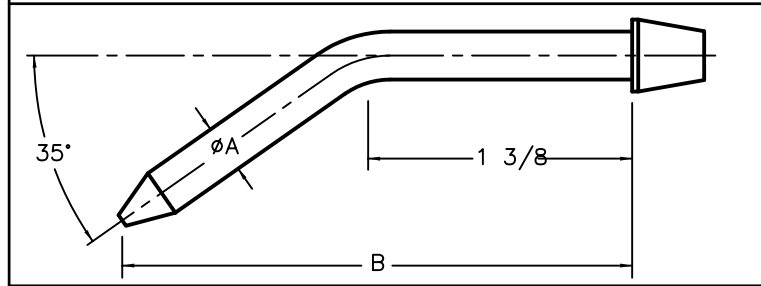
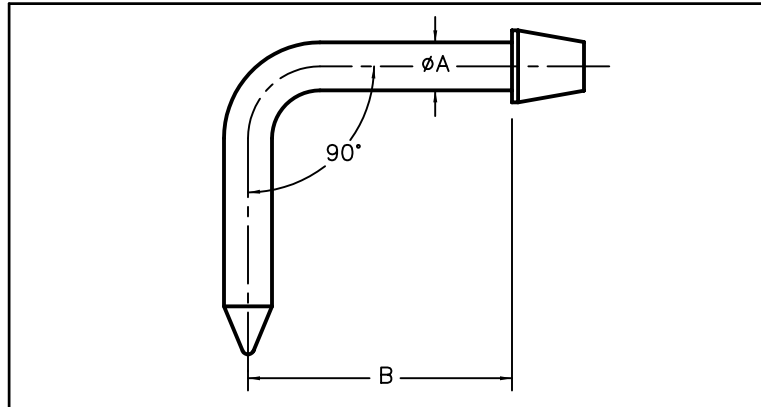
	2112-.125ST-1.25	1/8	1.25
	2112-.312-2.00	5/16	2.00
	2112-.312-1.50		1.50
	2112-.312-1.25		1.25
	2112-.312-1.00		1.00
	2112-.250-1.50	1/4	1.50
	2112-.250-1.25		1.25
	2112-.250-1.00		1.00
	2112-.187-1.50	3/16	1.50
	2112-.187-1.25		1.25
	2112-.187-1.00		1.00
	2112-.125-1.50	1/8	1.50
	2112-.125-1.25		1.25
	2112-.125-1.00		1.00
1" SPHER. RAD.	2112-.312-1.50	5/16	1.50
	2112-.312-1.25		1.25
	2112-.312-1.00		1.00
1" SPHER. RAD.	2112-.250-1.50	1/4	1.50
	2112-.250-1.25		1.25
	2112-.250-1.00		1.00
1" SPHER. RAD.	2112-.187-1.50	3/16	1.50
	2112-.187-1.25		1.25
	2112-.187-1.00		1.00
1" SPHER. RAD.	2112-.125-1.50	1/8	1.50
	2112-.125-1.25		1.25
	2112-.125-1.00		1.00
PART NO.		"A"	"B"

= TUNGSTEN WELDING FACE

UNLESS OTHERWISE SPECIFIED,
TOLERANCES:
FRACTIONS=±1/32
DEC .XX=±.015
DEC .XXX=±.005
ANGLES=±1/2°

A.P. SEEDORFF & CO., INC.
RESISTANCE WELDING EQUIPMENT
TEL. 714-252-5330
FAX 714-252-5335
1338 N. KNOLLWOOD CIRCLE, ANAHEIM, CA

SCALE	DWG. SIZE	DWG. NO.	REV.
NONE	A	2112-C	

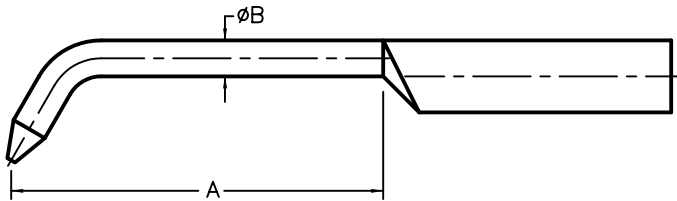
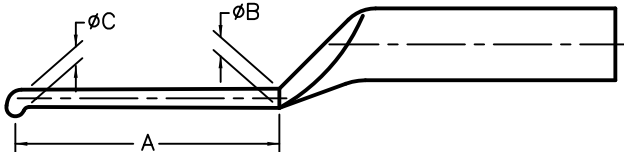


2268-.312-1.37-90°	5/16	1.37
2268-.250-1.37-90°	1/4	
2268-.312-2.75-35°	5/16	2.75
2268-.312-2.00-35°		2.00
2268-.250-2.75-35°	1/4	2.75
2268-.250-2.00-35°		2.00
PART NO.	"A"	"B"

UNLESS OTHER-
WISE SPECIFIED,
TOLERANCES:
FRACTIONS= $\pm 1/32$
DEC .XX= $\pm .015$
DEC .XXX= $\pm .005$
ANGLES= $\pm 1/2^\circ$

A.P. SEEDORFF & CO., INC.
RESISTANCE WELDING EQUIPMENT
TEL. 714-252-5330
FAX 714-252-5335
1338 N. KNOLLWOOD CIRCLE, ANAHEIM, CA

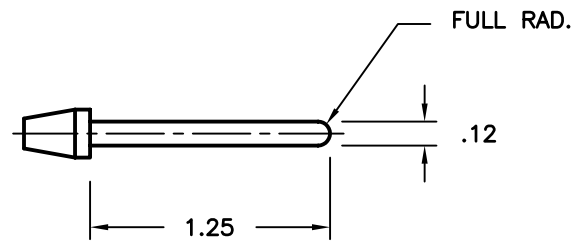
SCALE	DWG. SIZE	DWG. NO.	REV.
NONE	A	2268-C	

				
	2124-T	2.18	.150	.0
	2124-S	2.18	.187	.0
	2124-6.50	6.50	.312	.225
	2124-3.25	3.25	.250	.165
	2124-2.00	2.00	.187	.105
	2124-1.375	1.50	.100	.090
	2178-1.50	1.50	.100	.090
	PART NO.	"A"	"B"	"C"

UNLESS OTHER-
WISE SPECIFIED,
TOLERANCES:
FRACTIONS=±1/32
DEC .XX=±.015
DEC .XXX=±.005
ANGLES=±1/2°

A.P. SEEDORFF & CO., INC.
RESISTANCE WELDING EQUIPMENT
TEL. 714-252-5330
FAX 714-252-5335
1338 N. KNOLLWOOD CIRCLE, ANAHEIM, CA

SCALE	DWG. SIZE	DWG. NO.	REV.
NONE	A	5803-1	



UNLESS OTHER-
WISE SPECIFIED,
TOLERANCES:
FRACTIONS=±1/32
DEC .XX=±.015
DEC .XXX=±.005
ANGLES=±1/2°

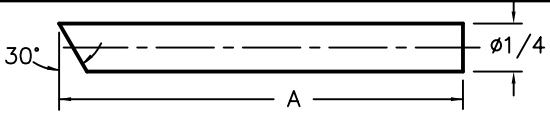
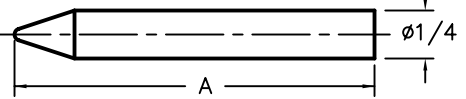
A.P. SEEDORFF & CO., INC.
RESISTANCE WELDING EQUIPMENT
TEL. 714-252-5330
FAX 714-252-5335
1338 N. KNOLLWOOD CIRCLE, ANAHEIM, CA

SCALE
NONE

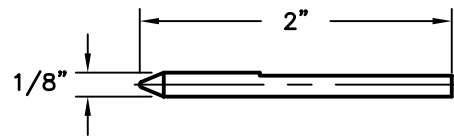
DWG. SIZE
A

DWG. NO.
8002-3

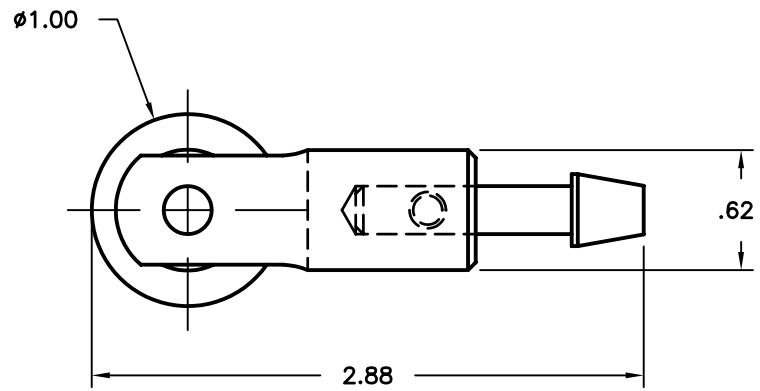
REV.

	2165-2	3 5/16
	2165-1	2 5/16
	2165	1 7/8
	PART NO.	"A"

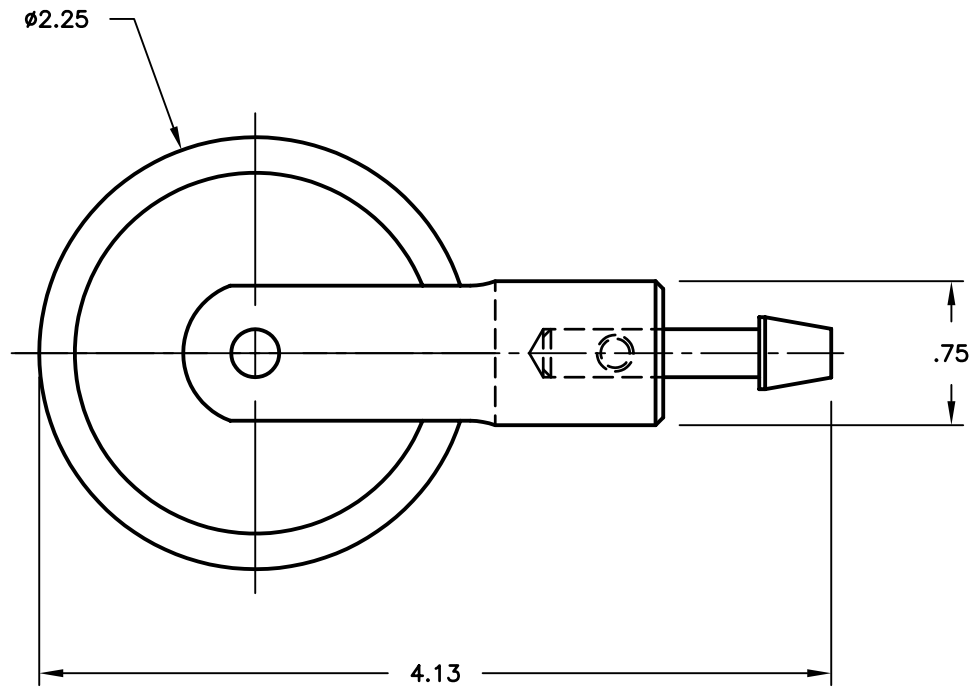
UNLESS OTHER- WISE SPECIFIED, TOLERANCES: FRACTIONS=±1/32 DEC .XX=±.015 DEC .XXX=±.005 ANGLES=±1/2°	A.P. SEEDORFF & CO., INC. RESISTANCE WELDING EQUIPMENT TEL. 714-252-5330 FAX 714-252-5335 1338 N. KNOLLWOOD CIRCLE, ANAHEIM, CA		
	SCALE	DWG. SIZE	DWG. NO.
NONE	A	2165-C	



UNLESS OTHER- WISE SPECIFIED, TOLERANCES: FRACTIONS= $\pm 1/32$ DEC .XX= $\pm .015$ DEC .XXX= $\pm .005$ ANGLES= $\pm 1/2^\circ$		A.P. SEEDORFF & CO., INC. RESISTANCE WELDING EQUIPMENT TEL. 714-252-5330 FAX 714-252-5335 1338 N. KNOLLWOOD CIRCLE, ANAHEIM, CA		
SCALE	NONE	DWG. SIZE	DWG. NO.	REV.
		A	2131	



UNLESS OTHER- WISE SPECIFIED, TOLERANCES: FRACTIONS= $\pm 1/32$ DEC .XX= $\pm .015$ DEC .XXX= $\pm .005$ ANGLES= $\pm 1/2^\circ$	A.P. SEEDORFF & CO., INC.		
	RESISTANCE WELDING EQUIPMENT		
	TEL. 714-252-5330		
	FAX 714-252-5335		
	1338 N. KNOLLWOOD CIRCLE, ANAHEIM, CA		
SCALE	DWG. SIZE	DWG. NO.	REV.
NONE	A	2134	



UNLESS OTHERWISE SPECIFIED, TOLERANCES: FRACTIONS= $\pm 1/32$ DEC .XX= $\pm .015$ DEC .XXX= $\pm .005$ ANGLES= $\pm 1/2^\circ$	A.P. SEEDORFF & CO., INC. RESISTANCE WELDING EQUIPMENT TEL. 714-252-5330 FAX 714-252-5335 1338 N. KNOLLWOOD CIRCLE, ANAHEIM, CA		
	SCALE NONE	DWG. SIZE A	DWG. NO. 8699