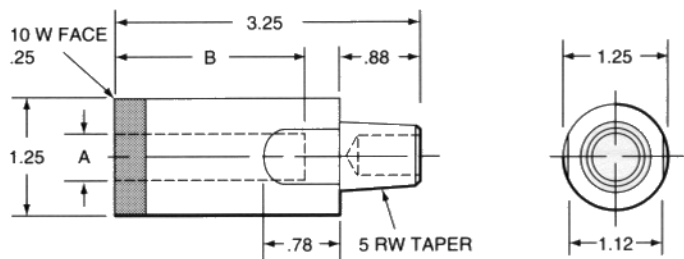
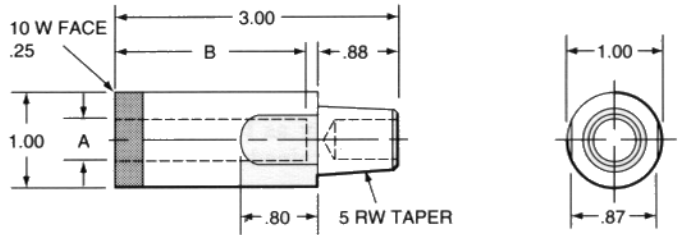


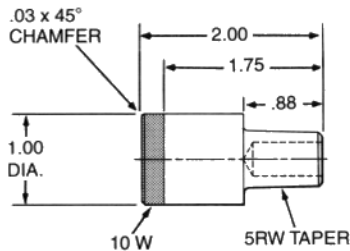
Tuffaloy 5 RW stud electrodes

These series of Stud electrodes are made from RWMA Class 2 material with TUFFALOYS' 10W (copper tungsten) on the weld face and wrench flats for easy removal from holders. The Insulator is made to withstand the constant friction that is applied as the stud is inserted and removed.

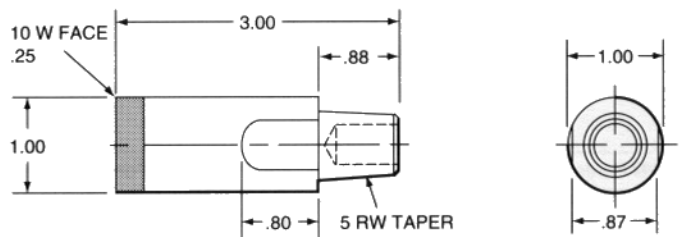
INSULATOR		Part Number
ID.	Length	
A	B	
.218 .243 .256 .319 .381 .400	1"	0316-4032
		0316-40062
		0316-4042
		0316-4052
		0316-4062
		0316-40102
.218 .243 .256 .319 .381 .400	2"	0316-4031
		0316-4006
		0316-4041
		0316-4051
		0316-4061
		0316-4010
.444 .479 .506 .569 .652 .694 .777	1"	1313-4372
		1313-40122
		1313-4382
		1313-4392
		1313-4402
		1313-4412
.444 .479 .506 .569 .652 .694 .777	2"	1313-4371
		1313-4012
		1313-4381
		1313-4391
		1313-4401
		1313-4411
		1313-4421



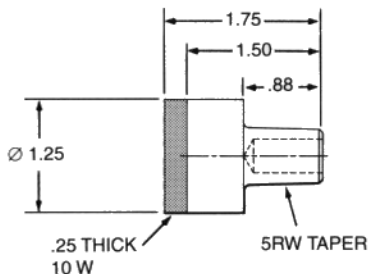
BACKUP ELECTRODES FOR UPPERS



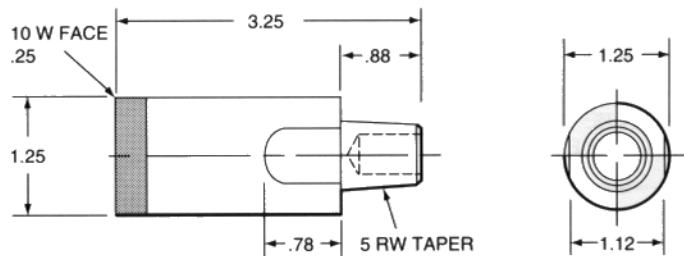
186-0311-10W



186-0316-10W



186-0313-10W



186-1313-10W