

CRANK ELECTRODES - CASTINGS, FORGED

Phone: 866-RES-WELD (739-9353) Fax: 714-252-5335

www.seedorffwelders.com

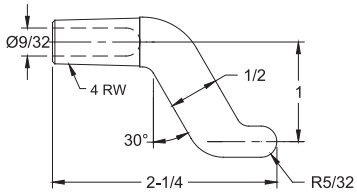
FEATURES AND SPECIFICATIONS

- Very strong bend electrodes for higher force applications
- Offset electrodes are for hard to reach locations
- Long lasting heavy duty electrodes

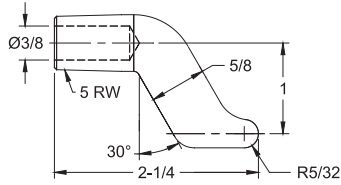
- Can be used in many job shop applications
- Works with all industry standard holders
- Use with 4 & 5 R.W.M.A Holders

- Electrical conductivity up to 80% IACS for castings & forged crank electrodes
- Rockwell hardness up to 70 HRB for castings & forged crank electrodes

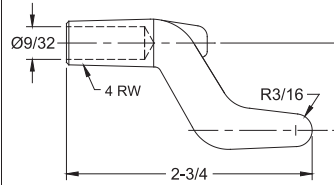
CRANK ELECTRODES - CASTING, FORGED



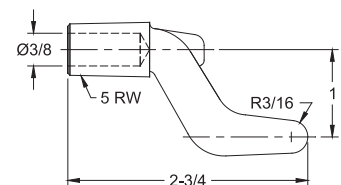
16-3835 CMW[®]3
CASTING



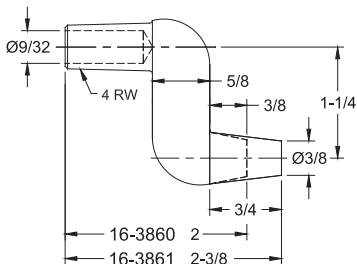
16-3836 CMW[®]3
CASTING



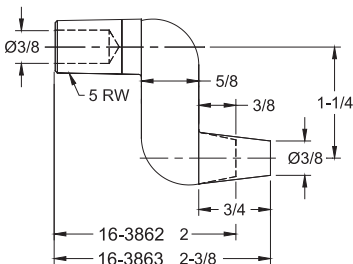
16-3837 CMW[®]3
CASTING



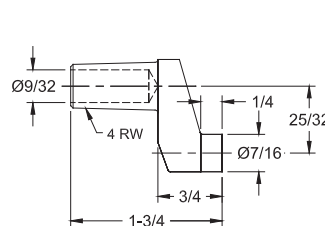
16-3838 CMW[®]3
CASTING



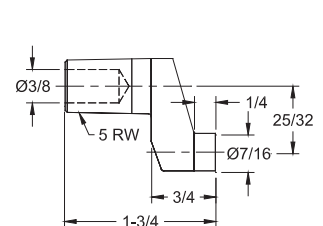
CMW[®]3
FORGED



CMW[®]3
FORGED



16-3873 CMW[®]3
CASTING



16-3874 CMW[®]3
CASTING