

ELECTRODE COOLING CHAMBERS & TAPERED ADAPTERS

Phone: 866-RES-WELD (737-9353)

Fax: 714-252-5335

www.seedorffwelders.com

FEATURES AND SPECIFICATIONS

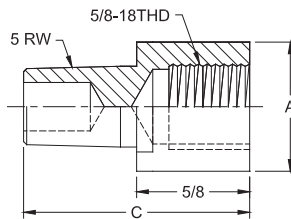
- Cooling Chamber recommended for additional cooling capacity on internally cooled applications
- Cooling Chamber is designed to provide supplementary cooling in special, hard to cool applications

- Securely sealed and locked in position with allen head set screw
- Tapered Adapter converts 5/8-18 thread to 5 RW tapers
- Use with Stud/Nut welding applications

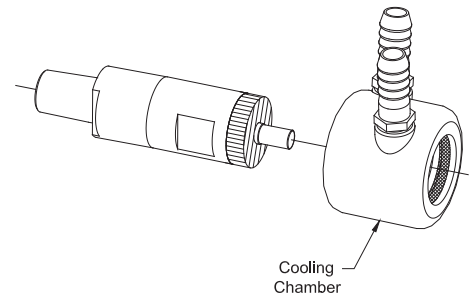
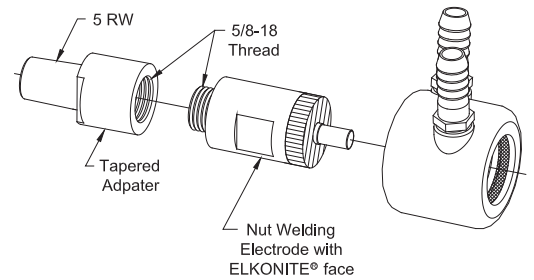
WELDING ELECTRODE ACCESSORIES



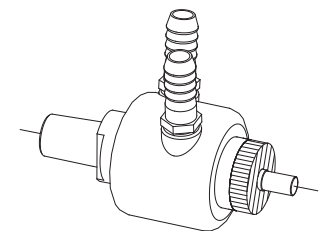
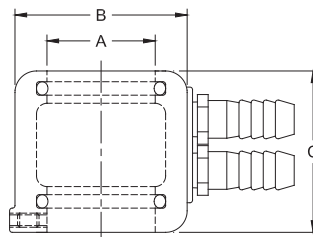
TAPERED ADAPTER			
Part No.	To Fit Dia. Electrode A	Taper	Overall Length C
18-7741	1	5 RW	1-3/4
18-7742	1-1/4		



TAPERED ADAPTER CONVERSION FROM 5/8-18 THREAD TO 5 RW TAPER



COOLING CHAMBER				
Part No.	To Fit Dia. Electrode A	O.D.		Overall Length C
		B		
18-1340	5/8	1-1/4		1-1/2
18-1341	7/8	1-1/2		1-1/2
18-1342	1	1-3/4		1-1/2
18-1343	1-1/4	2		1-7/8



ASSEMBLED CONVERSION