

STANDARD ADAPTERS

Straight Male Adapter Shanks For Female Caps

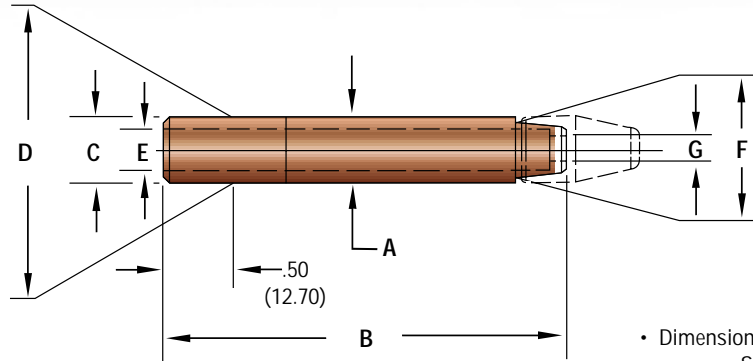


FIGURE 4-1 (Material RWMA Class 2 & 3)

ITEM NO.	DIMENSIONS						
	A Major Diameter	B Shank Overall Length	C Minor Taper Diameter	D Gauging Taper Diameter	E Water Hole Diameter	F Cap End Taper Diameter	G Taper Water Hole Diameter
CLF-2405T		1.25 (31.75)					
CLF-2406T		1.50 (38.10)					
CLF-2407T		1.75 (44.45)					
CLF-2408T		2.00 (50.80)					
CLF-2409T		2.25 (57.15)					
CLF-2410T		2.50 (63.50)					
CLF-2411T	.482 (12.24)	2.75 (69.85)	.438 (11.13)	.463 (11.76)	.28 (7.14)	.402 (10.21)	.25 (6.35)
CLF-2412T		3.00 (76.20)					
CLF-2413T		3.25 (82.55)					
CLF-2414T		3.50 (88.90)					
CLF-2415T		3.75 (95.25)					
CLF-2416T		4.00 (101.60)					
CLF-2506T		1.43 (36.32)					
CLF-2507T		1.68 (42.67)					
CLF-2508T		1.93 (49.02)					
CLF-2509T		2.18 (55.37)					
CLF-2510T		2.43 (61.72)					
CLF-2511T	.625 (15.88)	2.68 (68.02)	.588 (14.94)	.613 (15.57)	.34 (8.73)	.502 (12.75)	.265 (6.73)
CLF-2512T		2.93 (74.42)					
CLF-2513T		3.18 (80.77)					
CLF-2514T		3.43 (87.12)					
CLF-2515T		3.68 (93.47)					
CLF-2516T		3.93 (99.82)					

STANDARD ADAPTERS

Straight Male Adapter Shanks For Female Caps

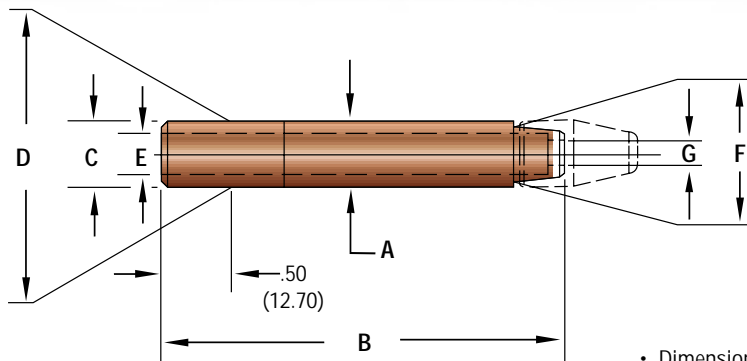


FIGURE 4-2 (Material RWMA Class 2 & 3)

ITEM NO.	DIMENSIONS						
	A Major Diameter	B Shank Overall Length	C Minor Taper Diameter	D Gauging Taper Diameter	E Water Hole Diameter	F Major Female Taper Diameter	G Taper Water Hole Diameter
CLF-2608T		2.00 (50.80)					
CLF-2610T		2.50 (63.50)					
CLF-2612T	.750 (19.05)	3.00 (76.20)	.706 (17.93)	.731 (18.57)	.38 (9.53)	.633 (16.08)	.343 (8.71)
CLF-2614T		3.50 (88.90)					
CLF-2616T		4.00 (101.60)					
CLF-2708T		2.00 (50.80)					
CLF-2710T		2.50 (63.50)					
CLF-2712T	.875 (22.23)	3.00 (76.20)	.819 (20.80)	.844 (21.44)	.38 (9.53)	.633 (16.08)	.343 (8.71)
CLF-2714T		3.50 (88.90)					
CLF-2716T		4.00 (101.60)					

• Dimensions Shown Are: inches (mm).
• See pg. 3-1 For Caps.

FOR ALL OTHER ITEMS:

- Check Key To Item Numbers For Availability
- Use Example For Ordering Available Items

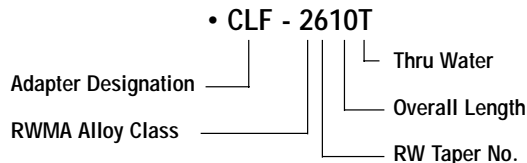
• ADDITIONAL LENGTHS ARE AVAILABLE UPON REQUEST.

KEY TO ITEM NUMBERS

- CLF - Adapter Designation
- 2 or 3 - RWMA Alloy Class
- 4 Thru 7 - RW Taper Number
- 05 Thru 16 - Overall Length in .25 (6.35) Increments
- T - Thru Water Hole
- Delete "T" If Blind Hole Is Required

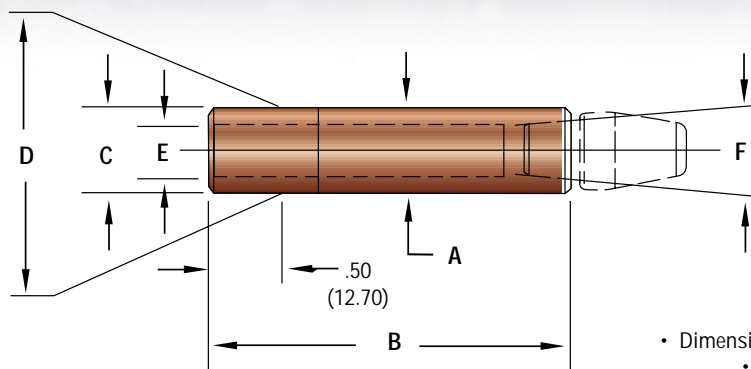
EXAMPLE:

MALE ADAPTER, CLASS 2, RW 6 TAPER, 2.50 (63.50) O.A.L., THRU WATER HOLE



STANDARD ADAPTERS

Straight Female Adapter Shanks For Male Caps



• Dimensions Shown Are: inches (mm).
• See pg. 3-2 For Caps.

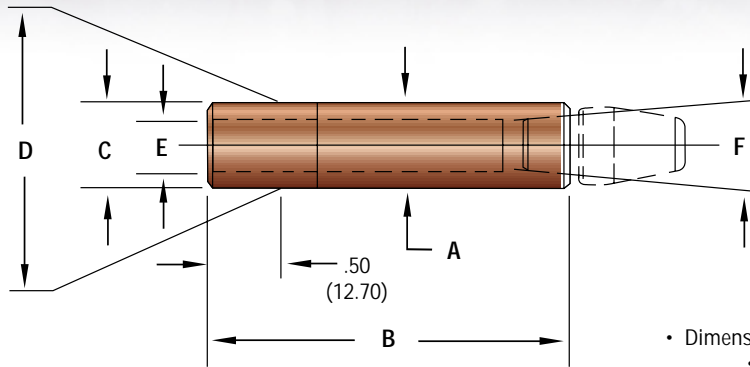
FIGURE 4-3 (Material RWMA Class 2 & 3)

ITEM NO.	DIMENSIONS					
	A Major Diameter	B Shank Overall Length	C Minor Taper Diameter	D Gauging Taper Diameter	E Water Hole Diameter	F Major Female Taper Diameter
WG-2405		1.25 (31.75)				
WG-2406		1.50 (38.10)				
WG-2407		1.75 (44.45)				
WG-2408		2.00 (50.80)				
WG-2409		2.25 (57.15)				
WG-2410		2.50 (63.50)				
WG-2411	.482 (12.24)	2.75 (69.85)	.438 (11.13)	.463 (11.76)	.28 (7.14)	.375 (9.53)
WG-2412		3.00 (76.20)				
WG-2413		3.25 (82.55)				
WG-2414		3.50 (88.90)				
WG-2415		3.75 (95.25)				
WG-2416		4.00 (101.60)				
WG-2505		1.25 (31.75)				
WG-2506		1.50 (38.10)				
WG-2507		1.75 (44.45)				
WG-2508		2.00 (50.80)				
WG-2509		2.25 (57.15)				
WG-2510		2.50 (63.50)				
WG-2511	.625 (15.88)	2.75 (69.85)	.588 (14.94)	.613 (15.57)	.38 (9.53)	.415 (10.54)
WG-2512		3.00 (76.20)				
WG-2513		3.25 (82.55)				
WG-2514		3.50 (88.90)				
WG-2515		3.75 (95.25)				
WG-2516		4.00 (101.60)				

• ADDITIONAL LENGTHS ARE AVAILABLE UPON REQUEST.

STANDARD ADAPTERS

Straight Female Adapter Shanks For Male Caps



- Dimensions Shown Are: inches (mm).
- See pg. 3-2 For Caps.

FIGURE 4-4 (Material RWMA Class 2 & 3)

ITEM NO.	DIMENSIONS					
CLASS 2	A Major Diameter	B Shank Overall Length	C Minor Taper Diameter	D Gauging Taper Diameter	E Water Hole Diameter	F Major Female Taper Diameter
WG-2608		2.00 (50.80)				
WG-2610		2.50 (63.50)				
WG-2612	.750 (19.05)	3.00 (76.20)	.706 (17.93)	.731 (18.57)	.44 (11.11)	.501 (12.73)
WG-2614		3.50 (88.90)				
WG-2616		4.00 (101.60)				
WG-2708		2.00 (50.80)				
WG-2710		2.50 (63.50)				
WG-2712	.875 (22.23)	3.00 (76.20)	.819 (20.80)	.844 (21.44)	.50 (12.70)	.613 (15.57)
WG-2714		3.50 (88.90)				
WG-2716		4.00 (101.60)				

• ADDITIONAL LENGTHS ARE AVAILABLE UPON REQUEST.

FOR ALL OTHER ITEMS:

- Check Key To Item Numbers For Availability
- Use Example For Ordering Available Items

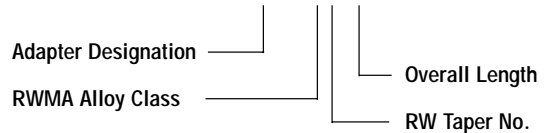
KEY TO ITEM NUMBERS

- WG - Adapter Designation
- 2 or 3 - RWMA Alloy Class
- 4 Thru 7 - RW Taper Number
- 05 Thru 16 - Overall Length in .25 (6.35) Increments

EXAMPLE:

FEMALE ADAPTER, CLASS 3, RW 4 TAPER, 1.25 (31.75) O.A.L.

• WG - 3405



STANDARD ADAPTERS

Offset Male Adapter Shanks For Female Caps

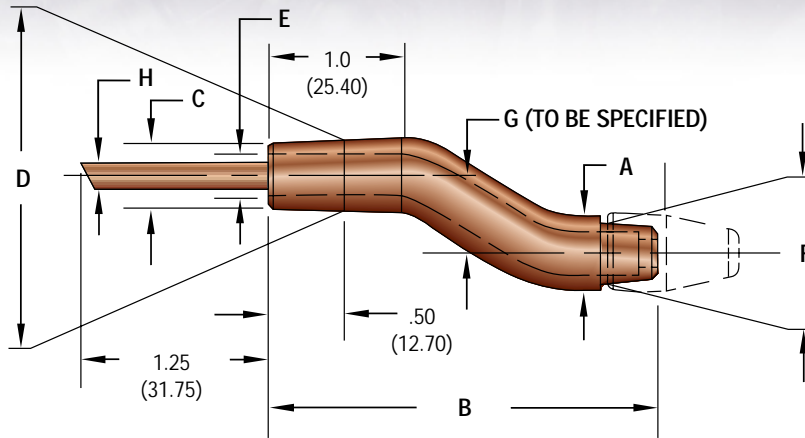


FIGURE 4-5 (Material RWMA Class 2 & 3)

• Dimensions Shown Are: inches (mm).
• See pg. 3-1 For Caps.

ITEM NO.	DIMENSIONS							
CLASS 2	A Major Diameter	B Shank Overall Length	C Minor Taper Diameter	D Gauging Taper Diameter	E Water Hole Diameter	F Cap End Taper Diameter	G Offset	H Water Tube Diameter
CLF-2410-04T		2.50 (63.50)					.25 (6.35)	
CLF-2411-04T		2.75 (69.85)					.25 (6.35)	
CLF-2412-04T		3.00 (76.20)					.25 (6.35)	
CLF-2413-04T		3.25 (82.55)					.25 (6.35)	
CLF-2410-08T	.482 (12.24)	2.50 (63.50)	.438 (11.13)	.463 (11.76)	.28 (7.14)	.402 (10.21)	.50 (12.70)	.19 (4.76)
CLF-2411-08T		2.75 (69.85)					.50 (12.70)	
CLF-2412-08T		3.00 (76.20)					.50 (12.70)	
CLF-2413-08T		3.25 (82.55)					.50 (12.70)	
CLF-2510-04T		2.50 (63.50)					.25 (6.35)	
CLF-2511-04T		2.75 (69.85)					.25 (6.35)	
CLF-2512-04T		3.00 (76.20)					.25 (6.35)	
CLF-2513-04T		3.25 (82.55)					.25 (6.35)	
CLF-2510-08T	.625 (15.88)	2.50 (63.50)	.588 (14.94)	.613 (15.57)	.34 (8.73)	.502 (12.75)	.50 (12.70)	.25 (6.35)
CLF-2511-08T		2.75 (69.85)					.50 (12.70)	
CLF-2512-08T		3.00 (76.20)					.50 (12.70)	
CLF-2513-08T		3.25 (82.55)					.50 (12.70)	

FOR ALL OTHER ITEMS:

- Check Key To Item Numbers For Availability
- Use Example For Ordering Available Items

• ADDITIONAL LENGTHS ARE AVAILABLE UPON REQUEST.

EXAMPLE:

MALE ADAPTER, CLASS 3,
RW 4 TAPER, 2.50 (63.50) O.A.L., .25 (6.35) OFFSET, THRU WATER HOLE

KEY TO ITEM NUMBERS

- CLF - Adapter Designation
- 2 or 3 - RWMA Alloy Class
- 4 Thru 6 - RW Taper Number
- 10 Thru 20 - Overall Length in .25 (6.35) Increments
- 04 Thru 16 - Offset in .06 (1.59) Increments
- T - Thru Water Hole
- Delete "T" If Blind Hole Is Required

